

THE
TOURNUS
ASSET

Heating system ensuring even temperature distribution inside units with holding of product core temperature greater than 63°C for over 2 hours.

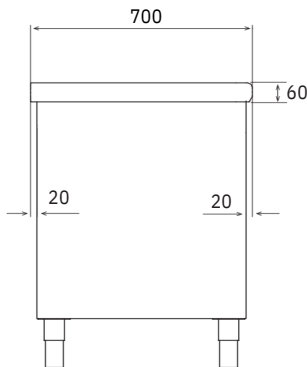
Standard units only. Units with ventilated heated interior. Stainless steel construction. Height adjustable from 900 to 950 mm.

Lined side walls. Ø 60 mm base with jacks. Lined sliding doors. One adjustable shelf. Electrical connection via

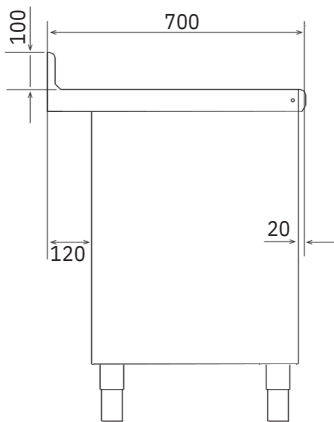
terminal block in the technical compartment (cable not supplied).

With heated interior and worktop

Power 3550 W. Voltage: 400 V - 3N ~ + PE



Width 700 mm without splashback



Width 700 mm with splashback



Overall dim. WxI (mm)	Central unit with sliding doors on 1 side	Unit with upstand and sliding doors on 1 side	Central unit with sliding doors on 2 sides
700x1200	804 675	824 675	804 685
700x1400	804 676	824 676	804 686
700x1600	804 677	824 677	804 687
700x1800	804 678	824 678	804 688
700x2000	804 679	824 679	804 689

With heated interior

Power 2050 W. Voltage: 230 V - 1 N ~ + PE

Overall dim. WxI (mm)	Central unit with sliding doors on 1 side	Unit with upstand and sliding doors on 1 side	Central unit with sliding doors on 2 sides
600x1200	504 675	524 675	504 685
600x1400	504 676	524 676	504 686
600x1600	504 677	524 677	504 687
700x1200	504 655	524 655	504 665
700x1400	504 656	524 656	504 666
700x1600	504 657	524 657	504 667
700x1800	504 658	524 658	504 668
700x2000	504 659	524 659	504 669

Extras for heated units

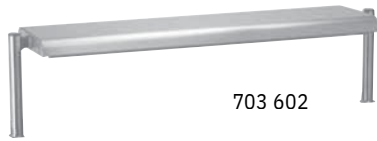
Description	Reference
Lock on heated units (1)	118 882
4 Stainless steel wheels ø 125 mm including 2 brakes	701 778

(1) Delivery in kit form, to assemble.

Shelves for heated units

Stainless steel shelf units, shelves 1,5 mm thick, columns 38 mm with curved base. Heating method: by radiation under the surface for infra red and halogen shelves, resistance in top part for the other models.

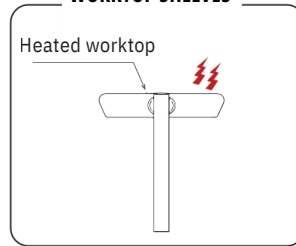
These shelves are made for Tournus units only. The shelves positioning requires an adaptation on the unit (specially made worktop), (top with fitting), on/off switch on control panel. Therefore, these shelves have to be ordered together with the unit



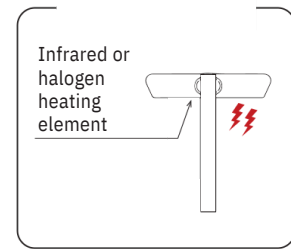
1 LEVEL

Depth 320 mm, height 360 mm.

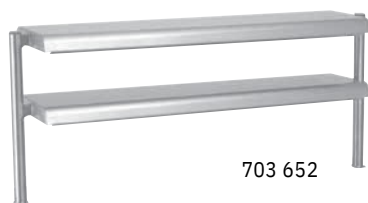
SINGLE-LEVEL HEATED WORKTOP SHELVES



SINGLE-LEVEL SHELVES INFRARED OR HALOGEN



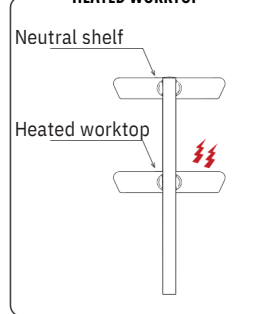
For units with length (mm)	Neutral	Neutral Led lighting		Heated		Infrared		Halogen	
	Ref.	Ref.	Power (W)	Ref.	Power (W)	Ref.	Power (W)	Ref.	Power (W)
1200	703 601	703 801	8	703 611	300	703 621	500	703 631	600
1400	703 602	703 802	14	703 612	600	703 622	750	703 632	900
1600	703 603	703 803	16	703 613	600	703 623	1000	703 633	1200
1800	703 604	703 804	16	703 614	600	703 624	1000	703 634	1200
2000	703 605	703 805	20	703 615	600	703 625	1250	703 635	1500



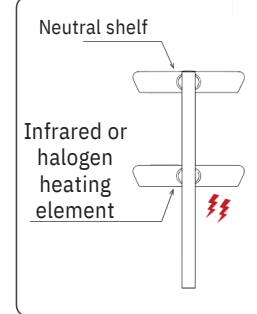
2 LEVELS

Depth 320 mm, height 630 mm. Neutral upper level.

2-TIER SHELVES WITH HEATED WORKTOP



2-TIER SHELVES INFRARED OR HALOGEN



For units with length (mm)	Lower level neutral	Lower level neutral with Led lighting		Heated lower level		Infrared lower level		Lower level halogen	
	Ref.	Ref.	Power (W)	Ref.	Power (W)	Ref.	Power (W)	Ref.	Power (W)
1200	703 651	703 811	8	703 661	300	703 671	500	703 681	600
1400	703 652	703 812	14	703 662	600	703 672	750	703 682	900
1600	703 653	703 813	16	703 663	600	703 673	1000	703 683	1200
1800	703 654	703 814	16	703 664	600	703 674	1000	703 684	1200
2000	703 655	703 815	20	703 665	600	703 675	1250	703 685	1500

The switch is fixed to an upright of the shelf

Special adaptation on existing unit:

- Fixing plate for adaptation to existing unit: ref: 703 599
- Switch for shelves with energy: ref: 703 600

25 avenue Jean Moulin - CS2005
71700 TOURNUS - FRANCE
RC Mâcon B 383 567 104
Code APE 295 E
SAS Capital 16 355 625€

FRANCE
Tél : 03 85 27 42 00
E-mail : commercial@tournus.com

EXPORT
Tél : + 33 (0)3 85 27 42 65
E-mail : export@tournus.com