

# NEUTRAL UNITS



## STAINLESS STEEL UNITS WITH SLIDING DOORS

Stainless steel construction, height 900 (+ 0/50 mm). Reinforced worktop with waterproof laminated panel. Rounded front edge, height 60 mm. One adjustable shelf. Reinforced inner panel, reinforced sliding doors, suspended on a rail in the top part, with stop-block. Stainless steel legs Ø 60 mm with jacks with no exposed thread. Folded front edge and upstand, shelf, handles and floor



*Also available with upstand !*



Rear recess of 120 mm allowing for clearance for pipes and grooved plinths.



Units with a box 660 mm deep meaning a GN 1/1 container can be inserted lengthways.

## STAINLESS STEEL UNITS

### Sliding door units on 2 sides



### One-side open units



### Corner units



### Standard units with hinged door



### Units with drawers



### Units with doors and drawers



## CUSTOMIZED STAINLESS STEEL UNITS

Stainless steel construction. Height 900 mm (+0/50 mm). Work surface lined with water repellent laminated panel. Rounded front edge, height 60 mm. One adjustable shelf. Sliding door units (hinged doors for lengths to 999 mm). Stainless steel legs Ø 60 mm with jacks with no exposed thread. Flattened folds on the front edge, upstand, shelf, handles and floor.

### Central units



### Units with upstand



## STAINLESS STEEL UNIT COMBINATIONS

Stainless steel construction. Adjustable height 900 to 950 mm.  
Rounded worktop front. Reinforced inner panel, reinforced sliding doors.



### CREATE YOUR LAYOUT

- Choosing the units without tops (Page 94 and Page 95)
- Adding the made-to-measure top (see Page 96)

Specify the location of the different elements of your creation in a sketch.

**The standard units below are designed to exclusively receive tops made by us.**



Units combinations

### Open standard units without worktop



### Standard units with sliding doors without worktop



### Units with hinged doors without worktop



### Bread bin cupboard without worktop



### Unit with integrated bin without top



### Unit with tilting bin on front



### Waste pedal bin unit



### Unit with hinged door and storage compartment



## Free place with rear covered side for container or trolley



In the case of units in extremity, foresee one lateral covered side on supplement.

Description	Length (mm)	Reference
Place for 1 flour container or 1 low trolley	500	701 806
Place for others lengths	The linear meter	701 807
Lateral panelling + legs	90	701 779



## Protective side glass

To separate a work top from a space (washing, etc.). Tempered glass sneeze-guard, 6 mm thick, 250 mm high fixed to 2 brushed stainless steel columns Ø 38 mm with rounded base. Assembly fixed to top of unit with no visible connecting parts.

Ref: 703 755

## WORKTOPS FOR UNITS

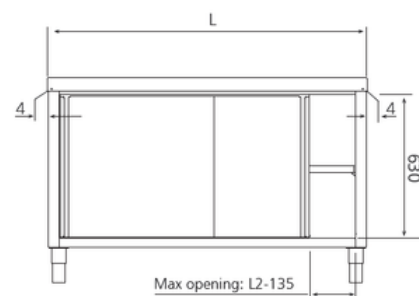
Only for Tournus basis. Upper worktop, monobloc top reinforced by a double side laminated panel. In order to obtain the total length on the worktop, add 8 mm to the total length of the combination (see drawing). For lengths over 2800 mm, please contact us (maxi length: 3800 mm).



Worktop for unit



Worktop for unit with upstand



## SUPPLÉMENTS POUR MEUBLES SUR-MESURE ET COMPOSITIONS

### Dessus de meubles

**Folded lateral upstand :** 701 776 (to right) et 701 777 (to left)

**Lateral upstand added :** 701 763 (to right) 701 764 (to left)

**Sheet steel for hiding the back recess on the units with upstand :** 701 708

**Seal cover between units 60 mm wide on front :** 130 566

**Orbital polishing, the linear meter :** 701 024

**Mirror polished edging, the linear meter :** 701 025

**Waste chute :** 701 101 G, 701 101 D, 701 101 C

**Waste chute + rubber flange :** 701 102G, C ou D

**Anti-drip edges :** 701 005

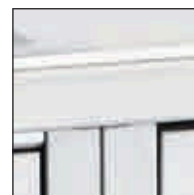
**Extra cost for worktop 20/10th thickness of mm**

**2 Ball corners for units with upstand :** 701 080

**4 Ball corners for central units :** 701 079



701 024



701 025



130 566



Waste chute + rubber flange, 701 102



Ball corners

### Pans

- **Welded basin 400 × 400 × 250 mm with overflow pipe + adaptation shelf :** 701 780 G, D et C
- **Welded basin 500 × 500 × 300 mm with overflow pipe + adaptation shelf :** 701 781 G, D et C
- **Cylindrical welded basin Ø 300 mm, depth 160 mm with overflow pipe :** 701 033 G, D et C



## Tap

- Mixer tap 1/2, flow rate 30 l/mn : 230 300
- Mixer tap with electronic control, flow rate 3 l/mn : 230 507
- Drilling for tap (not supplied) : 701 782



Robinet 230 300



Robinet 230 507

## Others

- Lock for units with sliding doors : 118 882
- Lock for units with hinged doors (1 by door) : 701 770
- 4 Wheels with stainless steel cover ø 125 mm with 2 brakes : 701 778
- Lower connection plate between units – per unit : 130 567
- Stainless steel plinths, per linear metre : 701 790

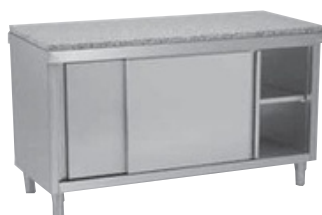


130 567



118 882

## UNITS WITH GRANITE WORKTOP



Granit  
Crema Julia\*

An adaptation is required to make a unit with a granite top. To calculate the whole price: add the price of the granite to the price of the unit with corresponding stainless steel top (standard or composition). Colour: crema julia.

Sheets of granite supplied separately: to avoid any risk of breakage during transport, they are shipped on a frame, to be provided for in the order

## USTENSIL WALL BRACKETS

Wall-mounted brackets to store kitchen and confectionary utensils and accessories. Drilled stainless steel panels high for removable hooks, 200 mm long. 2 heights: 660 and 900 mm. 2 lengths: 600 and 900 mm. The lengths 1200, 1500 and 1800 mm are formed by juxtaposing the base support. Each accessories holder bracket is delivered with a lot of hooks whose number varies depending on the surface. Security: hooks have a protective cap made of polyethylene

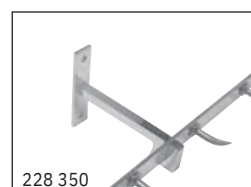


## WALL ACCESSORIES

- Fold wall shelf : 800 622
- Utensils-hanging bar : 805 775
- Bar to index cards. 915 mm : 229 974
- Bar to index cards. 1220 mm : 230 059
- Magnetic knife-holder : 228 400
- Sloping display-top for 3 GN 1/3 pans : 805 793
- Sloping display-top for 6 GN 1/3 pans : 805 794
- Wall-mounted shelf with sloped stand : 805 774
- Meat hook bar : 701 410
- S/steel wall support for meat hook bar the unit : 228 350
- S/steel wall support for scraper : 800 623
- Rectangular splashback : 701 415
- Rectangular splashback with insulation : 701 416



800 622  
ouvert



228 350

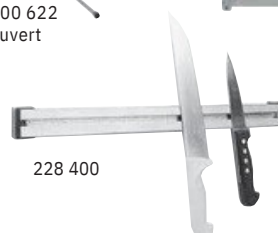


701 410

800 623



805 775



228 400



805 793