

An even wider choice

The range of Tournus **GC wash basins** now includes 5 models for 5 different ways to equip your kitchen.

The simple GC wash basin: the bowl, with apron around 3 sides and a 29 mm rim at the back, fixes to the wall with screws.



Ref. 806 381



Ref. : 806 383

The GC wash basin with 540 mm high splash back: the splash back is especially designed to make splashes run back into the bowl so that the wall is completely protected against dampness. The splash back includes an integral soap dispenser, capacity 350 ml.



Ref. : 806 385

The GC wash basin with 790 mm high splash back: this has all the advantages of the previous model, while the higher splash back brings the additional possibility of fixing a paper towel dispenser, capacity 250 towels.

Wall-mounted waste bins: made of stainless steel or made of PVC



Ref: 806 395



Ref: 806 396

All these wash basins have knee-actuated controls, and the tap is turned on by pressing the paddle located on the front panel.

Sturdy and ergonomic

The GC wash basin is a sturdy product designed to be long-lasting. It is made of grade stainless steel. It comes complete with a hot and cold water pre-mixer, equipped with check valves in order to protect the mains drinking water supply. It is supplied with the fixing strut, the hose to connect the pre-mixer to the goose neck, the goose neck itself, and the sink pipe and trap.

The tap outlet has an aerator giving a softer stream of water with fewer splashes.



25 avenue Jean Moulin
 BP 59
 71700 TOURNUS - FRANCE

France :
 Tel : 03 85 27 42 00
 Fax : 03 85 27 42 50

E-mail :
 commercial@tournus.com

Export :
 Tel : + 33 (0)3 85 27 42 65
 Fax : + 33 (0)3 85 27 42 60

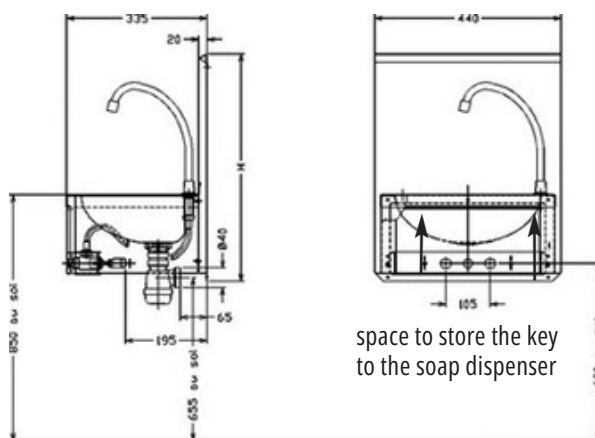
E-mail :
 export@tournus.com

Web site :
 www.tournus.com

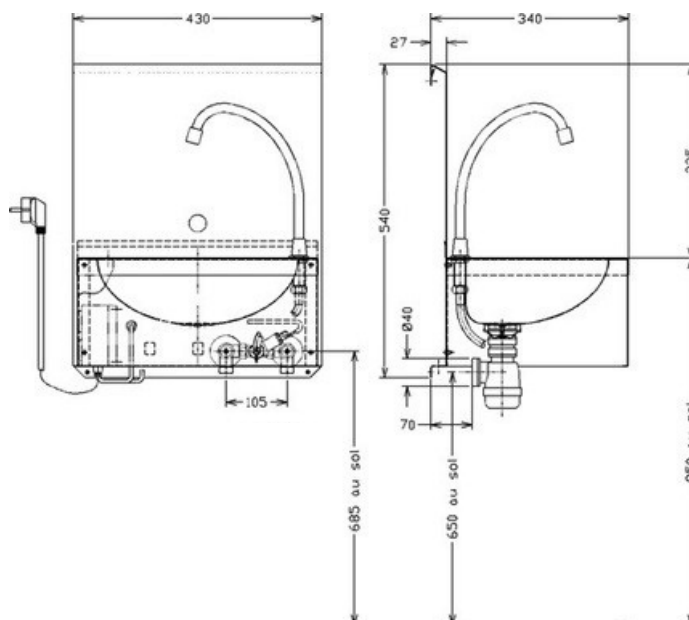
RC Mâcon B 383 567 104
 Code APE 295 E
 SA Capital 16 355 625 €

GC WASH BASIN

TECHNICAL SPECIFICATIONS



- Constructed from stainless steel, bowl 345 x 245 x 120 mm
- Goose neck tap height 150 mm with aerator.
- Temperature adjusted by means of 2 hot/cold water supply taps fitted with check valves, accessed under the control paddle or front panel.
- Connection to 2 male threaded inlets 15 x 21.
- Delivered with fixing strut, pipe for connecting the pre mixer to the goose neck, the goose neck itself, and sink pipe and trap.



GC wash basin with electronic controls:

- Control with timer, pre-set to 2 seconds, adjustable up to 12 seconds
- Power supply cable 3 x 1.5 mm length 2 m, with plug
- Soap dispenser locked with key
- The wash basin must be earthed

Description	Overall dim. l x W x h (mm)	Reference
GC Wash-basin	415 x 310 x 185	806 381
GC wash-basin with upstand height 540 mm	440 x 335 x 540	806 382
GC wash-basin with upstand height 540 mm + soap dispenser	440 x 335 x 540	806 383
GC wash-basin with upstand height 790 mm	440 x 335 x 790	806 384
GC wash-basin with upstand height 790 mm + soap dispenser and paper towel dispenser	440 x 335 x 790	806 385