

NEW
NON-SLIP
GRATING

The Tournus Equipement ranges is extended to new floor drain systems of 1000, 1500, 2000 and 2500 mm long **in width of 250 mm**. This drain systems are designed to be positioned in corridors in front of elevators and doors of premises. It is also extended to **non-slip stainless steel grating** available on all the models of drain systems.

Thanks to the wide range of Tournus drain systems, it is always possible to find one that meets the exact needs of any installation. There are 276 models for use in canteen and restaurant kitchens and supermarkets, for tiles or resin floor coverings.

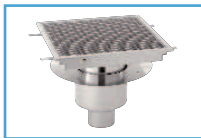
EASY INSTALLATION

CHARACTERISTICS APPLICABLE TO ALL THE FLOOR DRAINS:

Small dimensions for the reservation: no recess is required in the concrete slab flooring to install drain systems. A reserved hole or core drilling of diameter 225 mm suffices.

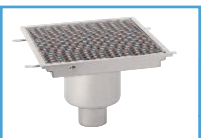
Outlet diameter 100 mm: this allows for easy connection to the type of piping used most often.

PARTICULAR ADVANTAGES:



FLOOR DRAINS WITH ADJUSTABLE BOWL :

The body that supports the grating is independent; it is suitable for a combined screed + tiling depth of 55 to 150 mm. The drain system creates waterproofing of the slab with overlaps into the casing prior to applying the screed. The body can be moved in all directions to make it easier to lay the tiles.



FLOOR DRAINS WITH SINGLE-PIECE BOWL

Simplified model for installation without any need for re-waterproofing.

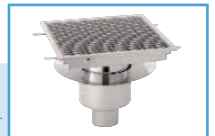


NEW WIDTH
250 MM

FLOOR DRAINS WITH VERTICAL

OUTLET

The removable funnel-type trap makes cleaning of the whole drain easier.



FLOOR DRAINS WITH HORIZONTAL

OUTLET

Shallower, thanks to the lateral discharge.



FLOOR DRAINS WITH OFF-CENTRE

OUTLET

To facilitate installation when an appliance which is difficult to move is to be installed over the drain.



SAFETY

Tournus pays great attention to the design and manufacture of its products in order to be able to guarantee durable use under the best possible conditions.

1 DURABILITY WITH TIME

- Stainless steel construction.
- The trap housing is press-drawn, with no weld in the area of the water trap.
- The mesh size of the gratings is 19 x 19 mm, for easy passage of trolleys.

3 HIGH THROUGHPUT

- 4 litres per second.

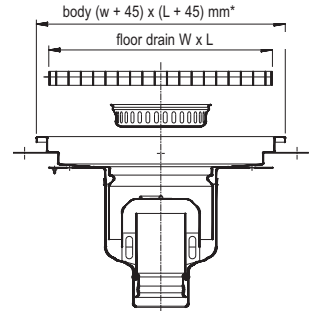
2 'HYGIENCE

- The depth of water is 60 mm, in accordance with the "DTU".
- The outlet includes a cross to trap pieces of scrap.
- The gratings, with a choice of either stainless steel or galvanised, can be cleaned in a sink.

FLOOR DRAINS WITH VERTICAL OUTLET

**NEW WIDTH
250 MM**

Stainless steel construction with stainless steel or galvanised grating, mesh size 19 x 19 mm. Distributed load: 3 t/m²

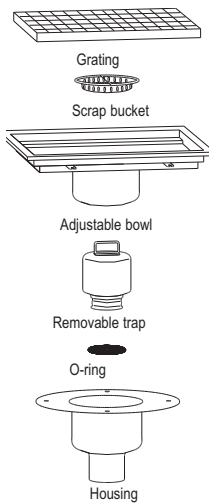


(*) : L + 50 mm instead of L + 45 mm for the following drains: 250 x 2000, 250 x 2500, 300 x 900, 400 x 1200 and 500 x 1500 mm.

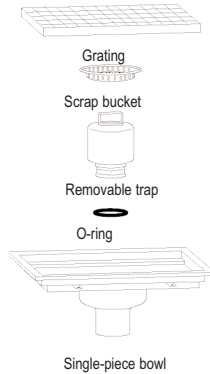


CENTRAL OUTLET

WITH ADJUSTABLE BOWL



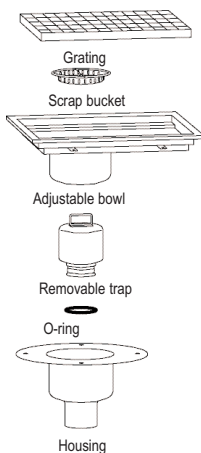
WITH ONE-PIECE BOWL



FLOOR DRAINS		WITH CENTRAL OUTLET AND ADJUSTABLE BOWL			WITH CENTRAL OUTLET AND ONE-PIECE BOWL		
DIM. OF FLOOR DRAINS W x L (MM)	OUTSIDE DIMENSIONS (MM)	WITH STAINLESS STEEL GRATING	WITH SLIP PROOF STAINLESS STEEL GRATING	WITH GALVANISED GRATING	WITH STAINLESS STEEL GRATING	WITH SLIP PROOF STAINLESS STEEL GRATING	WITH GALVANISED GRATING
250 x 1000	295 x 1045	507 160	557 160	507 170	507 200	557 200	507 210
250 x 1500	295 x 1545	507 161	557 161	507 171	507 201	557 201	507 211
250 x 2000	295 x 2050	507 162	557 162	507 172	507 202	557 202	507 212
250 x 2500	295 x 2550	507 163	557 163	507 173	507 203	557 203	507 213
300 x 300	345 x 345	507 000	557 000	507 010	507 040	557 040	507 050
300 x 600	345 x 645	507 001	557 001	507 011	507 041	557 041	507 051
300 x 900	345 x 950	507 002	557 002	507 012	507 042	557 042	507 052
400 x 400	445 x 445	507 003	557 003	507 013	507 043	557 043	507 053
400 x 800	445 x 845	507 004	557 004	507 014	507 044	557 044	507 054
400 x 1200	445 x 1250	507 005	557 005	507 015	507 045	557 045	507 055
500 x 500	545 x 545	507 006	557 006	507 016	507 046	557 046	507 056
500 x 1000	545 x 1045	507 007	557 007	507 017	507 047	557 047	507 057
500 x 1500	545 x 1550	507 008	557 008	507 018	507 048	557 048	507 058

OFF-CENTRE OUTLET

WITH ADJUSTABLE BOWL



WITH ONE-PIECE BOWL



FLOOR DRAINS		WITH OFF-CENTRE OUTLET AND ADJUSTABLE BOWL			WITH OFF-CENTRE OUTLET AND ONE-PIECE BOWL		
DIM. OF FLOOR DRAINS W x L (MM)	OUTSIDE DIMENSIONS (MM)	WITH STAINLESS STEEL GRATING	WITH SLIP PROOF STAINLESS STEEL GRATING	WITH GALVANISED GRATING	WITH STAINLESS STEEL GRATING	WITH SLIP PROOF STAINLESS STEEL GRATING	WITH GALVANISED GRATING
250 x 1000	295 x 1045	507 180	557 180	507 190	507 220	557 220	507 230
250 x 1500	295 x 1545	507 181	557 181	507 191	507 221	557 221	507 231
250 x 2000	295 x 2050	507 182	557 182	507 192	507 222	557 222	507 232
250 x 2500	295 x 2550	507 183	557 183	507 193	507 223	557 223	507 233
300 x 600	345 x 645	507 021	557 021	507 031	507 061	557 061	507 071
300 x 900	345 x 950	507 022	557 022	507 032	507 062	557 062	507 072
400 x 800	445 x 845	507 024	557 024	507 034	507 064	557 064	507 074
400 x 1200	445 x 1250	507 025	557 025	507 035	507 065	557 065	507 075
500 x 1000	545 x 1045	507 027	557 027	507 037	507 067	557 067	507 077
500 x 1500	545 x 1550	507 028	557 028	507 038	507 068	557 068	507 078

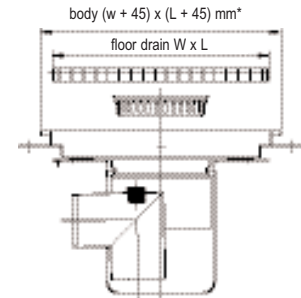
FLOOR DRAINS WITH HORIZONTAL OUTLET

NEW WIDTH
250 MM

Stainless steel construction with stainless steel or galvanised grating, mesh size 19 x 19 mm. Distributed load: 3 t/m², concentrated load: 750 kg. Independent scrap bucket. Press-drawn floor drain casing, regulatory water height of 60 mm. Outlet Ø 100 mm, throughput 4 litres/second.

Floor drains with adjustable body: suitable for a combined screed + tiling depth of 55 to 150 mm. The floor drain creates waterproofing of slab with overlaps into the casing prior to applying the screed'

Floor drains with single-piece body: grating support body integral to the casing. With this one-piece design, it is not possible to create the slab waterproofing with overlaps into the casing.'



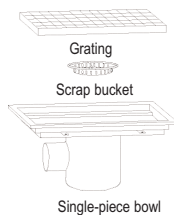
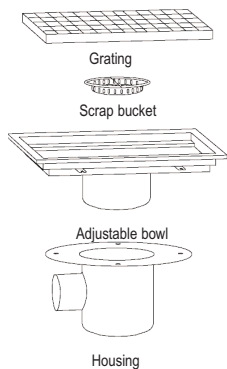
(*) : L + 50 mm instead of L + 45 mm for the following drains:
250 x 2000, 250 x 2500, 300 x 900, 400 x 1200 and 500 x 1500 mm.



CENTRAL OUTLET

WITH ADJUSTABLE BOWL

WITH ONE-PIECE BOWL

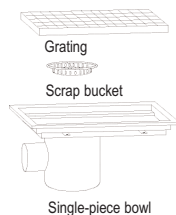
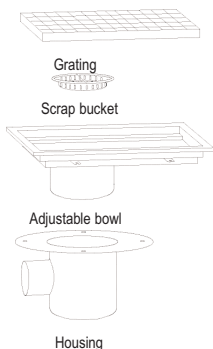


FLOOR DRAINS		WITH CENTRAL OUTLET AND ADJUSTABLE BOWL			WITH CENTRAL OUTLET AND ONE-PIECE BOWL		
DIM. OF FLOOR DRAINS W x L (MM)	DIMENSIONS W x L (MM)	WITH GALVANISED GRATING	WITH SLIP PROOF STAINLESS STEEL GRATING	WITH GALVANISED GRATING	WITH GALVANISED GRATING	WITH SLIP PROOF STAINLESS STEEL GRATING	WITH GALVANISED GRATING
250 x 1000	295 x 1045	507 240	557 240	507 250	507 280	557 280	507 290
250 x 1500	295 x 1545	507 241	557 241	507 251	507 281	557 281	507 291
250 x 2000	295 x 2050	507 242	557 242	507 252	507 282	557 282	507 292
250 x 2500	295 x 2550	507 243	557 243	507 253	507 283	557 283	507 293
300 x 300	345 x 345	507 080	557 080	507 090	507 120	557 120	507 130
300 x 600	345 x 645	507 081	557 081	507 091	507 121	557 121	507 131
300 x 900	345 x 950	507 082	557 082	507 092	507 122	557 122	507 132
400 x 400	445 x 445	507 083	557 083	507 093	507 123	557 123	507 133
400 x 800	445 x 845	507 084	557 084	507 094	507 124	557 124	507 134
400 x 1200	445 x 1250	507 085	557 085	507 095	507 125	557 125	507 135
500 x 500	545 x 545	507 086	557 086	507 096	507 126	557 126	507 136
500 x 1000	545 x 1045	507 087	557 087	507 097	507 127	557 127	507 137
500 x 1500	545 x 1550	507 088	557 088	507 098	507 128	557 128	507 138

CENTRAL OUTLET

WITH ADJUSTABLE BOWL

WITH ONE-PIECE BOWL



FLOOR DRAINS		WITH OFF-CENTRE OUTLET AND ADJUSTABLE BOWL			WITH OFF-CENTRE OUTLET AND ONE-PIECE BOWL		
DIM. OF FLOOR DRAINS	DIMENSIONS W x L (MM)	WITH GALVANISED GRATING	WITH SLIP PROOF STAINLESS STEEL GRATING	WITH GALVANISED GRATING	WITH GALVANISED GRATING	WITH SLIP PROOF STAINLESS STEEL GRATING	WITH GALVANISED GRATING
250 x 1000	295 x 1045	507 260	557 260	507 270	507 310	557 310	507 320
250 x 1500	295 x 1545	507 261	557 261	507 271	507 311	557 311	507 321
250 x 2000	295 x 2050	507 262	557 262	507 272	507 312	557 312	507 322
250 x 2500	295 x 2550	507 263	557 263	507 273	507 313	557 313	507 323
300 x 600	345 x 645	507 101	557 101	507 111	507 141	557 141	507 151
300 x 900	345 x 950	507 102	557 102	507 112	507 142	557 142	507 152
400 x 800	445 x 845	507 104	557 104	507 114	507 144	557 144	507 154
400 x 1200	445 x 1250	507 105	557 105	507 115	507 145	557 145	507 155
500 x 1000	545 x 1045	507 107	557 107	507 117	507 147	557 147	507 157
500 x 1500	545 x 1550	507 108	557 108	507 118	507 148	557 148	507 158