

The range of catering units is destined for small catering establishments and restaurants. Of good quality, corresponding to the Tournus standard production, the range is made entirely out of stainless steel. This range has a limited selection of dimensions and **doesn't allow any made to measure manufacture.**

TABLES

- Stainless steel work surface, thickness 1,2 mm, with waterproof laminated panel lining, and reinforced with a profile frame.
- Edge strip height 40 mm with straight edges. Legs Ø 38 mm, set in by 65 mm to the rear on tables with upstand, and 55 mm on central tables, with adjustable jacks.
- Height 900 mm (+0/30 mm).



Central tables

- Wall tables :** upstand height 100 mm.
- Tables with shelf :** shelf, 40 mm dropped edges .
- Chef's wall tables:** pressed left sink 400 x 400 x 250 mm, with plug hole and overflow.



- Flattened folds used throughout for the work surface, upstand, and shelf to avoid any risk of cuts
- Delivered in flat pack under plastic film.
- Very easy assembly, by push fitting



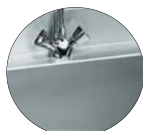
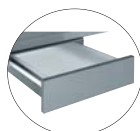
Dimensions	Central catering table	Catering table with upstand
700 x 1000	503 202	503 222
700 x 1200	503 203	503 223
700 x 1400	503 204	503 224
700 x 1600	503 206	503 226
700 x 1900	503 208	503 228

Dimensions	Central catering table + lower shelf	Catering table with upstand + lower shelf
700 x 1000	503 242	503 262
700 x 1200	503 243	503 263
700 x 1400	503 244	503 264
700 x 1600	503 246	503 266
700 x 1900	503 248	503 268

Dimensions	Chef's wall tables sink left	Chef's wall tables + lower shelf
700 x 1400	503 284	503 304
700 x 1600	503 286	503 306

Options :

- drawer with stainless steel front panel and polypropylene tray* Ref. **503 520**
- mixer tap for chef's table* Ref. **230 300**



25 avenue Jean Moulin
BP 59
71700 TOURNUS - FRANCE

France :

Tel: 03 85 27 42 42
Fax : 03 85 27 42 50
E-mail :
commercial@tournus.com

Export :

Tel: + 33 (0)3 85 27 42 65
Fax : + 33 (0)3 85 27 42 60
E-mail :
export@tournus.com

Website :
www.tournus.com

RC Mâcon B 383 567 104
Code APE 295 E
SAS Capital 16 355 625 €

NEW



CATERING SINKS

- Stainless steel construction, height 900 mm.
- Front edge height 40 mm. Folded upstand height 100 mm.
- Legs Ø 38 mm with jack, 80 mm indent at rear. Grooved draining boards, anti-drip edges.
- Soundproofed basins and draining boards.
- Mixer tap 15 x 21, flow 30 l/min
- Delivered flat packed in carton

CATERING SINKS BASIN 400 x 500 MM

Désignation	Dimensions	Références
2 basins + 1 right draining board	700 x 1600	503 611

CATERING SINKS BASIN 600 x 500 MM

1 basin	700 x 800	503 612
1 basin + 1 right draining board	700 x 1400	503 613

CATERING SINKS FOR DISWASHER

2 basins 400 x 500 + left draining board	700 x 1600	503 614
1 basin 500 x 500 + left draining board	700 x 1200	503 615

Exist also : catering sinks with shelf

NEW



WALL CABINETS

- Stainless steel construction. Height 600 mm.
- Adjustable middle shelf.
- Sliding doors, suspended from a rail fixed to the upper part, with end of travel buffer.
- Fixed to wall using 2 supports.

Catering wall cabinets	Dimensions	Reference
with sliding doors	700 x 1200	503 553
with sliding doors	700 x 1400	503 554
with sliding doors	700 x 1800	503 557

Option : lock and key

Ref. **118 882**

NEW



UNITS

- Stainless steel construction, height 900 mm (+0/65 mm).
- Top surface lined with waterproof laminated panel.
- Folded upstand height 100 mm.
- Front strip height 40 mm.
- Adjustable middle shelf.
- Reinforced sliding doors, suspended from a rail fixed on the upper part, with end of travel buffer.
- Polyamide legs, height 155 mm with jack with no exposed thread.
- Flattened folds used throughout, on the front edge, the upstand, shelf, handles, floor, in order to avoid all risk of cuts.
- Delivered on pallet, protected with plastic film.

Catering units with upstand	Dimensions	References
with sliding doors	700 x 1200	503 503
with sliding doors	700 x 1400	503 504
with sliding doors	700 x 1800	503 507

Option : lock and key

Ref. **118 882**