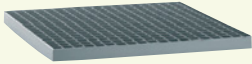


**FOR ALL DIMENSIONS
IN STANDARD :**



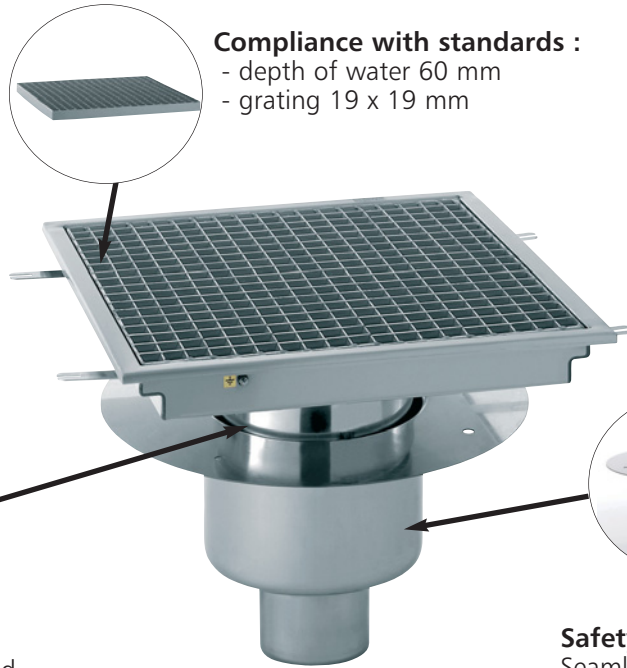
- stainless steel grating
- stainless grating non-slip grating
- with galvanised grating

Compliance with standards :

- depth of water 60 mm
- grating 19 x 19 mm

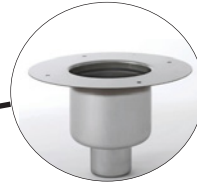
Easy installation :

small footprint, wide range to meet the needs of every installation, outlet Ø 100 mm.



Hygienic :

- capacity : 4 litres/second
- removable trap
- scrap bucket



Safety :

Seamless press-drawn housing. Equipotential connections.

WIDE RANGE : VERTICAL AND HORIZONTAL OUTLET, MANY SIZES.